

Name: _____

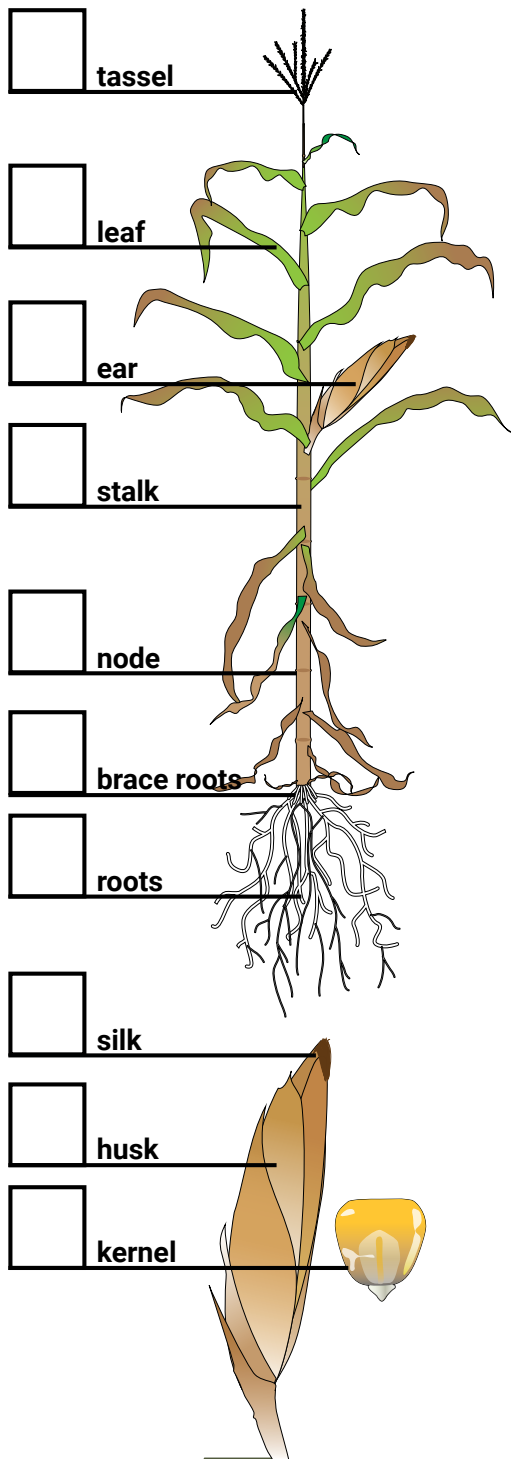
Date: _____

Class: _____

LESSON 3:

TEST WHAT YOU LEARNED

Match the functions with their plant structures.



- A. It is the corn's seed with one main function; to make another corn plant.
- B. The male part of the corn plant that contains the pollen.
- C. Roots that form above ground to keep the plant standing upright.
- D. Provides the surface area where light is intercepted and photosynthesis takes place.
- E. Collects pollen and carries it inside to the female part of the plant to grow a seed.
- F. A place on the stem where growth occurs.
- G. The female part of the plant that contains the kernels that are forming after fertilization.
- H. The main body (stem) of the corn plant.
- I. Grow underground and bring water and nutrients to the rest of the plant.
- J. Leaf-like structure that wraps around the ear for protection.

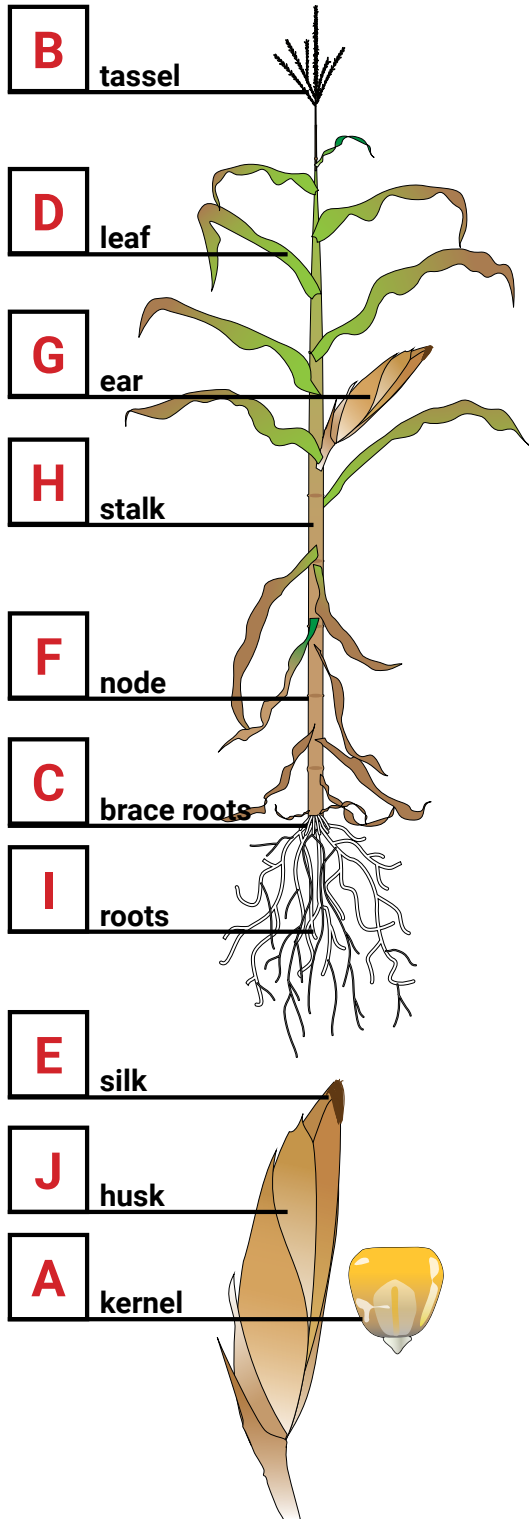


ANSWER KEY

LESSON 3:

TEST WHAT YOU LEARNED

Match the functions with their plant structures.



- A. It is the corn's seed with one main function; to make another corn plant.
- B. The male part of the corn plant that contains the pollen.
- C. Roots that form above ground to keep the plant standing upright.
- D. Provides the surface area where light is intercepted and photosynthesis takes place.
- E. Collects pollen and carries it inside to the female part of the plant to grow a seed.
- F. A place on the stem where growth occurs.
- G. The female part of the plant that contains the kernels that are forming after fertilization.
- H. The main body (stem) of the corn plant.
- I. Grow underground and bring water and nutrients to the rest of the plant.
- J. Leaf-like structure that wraps around the ear for protection.

